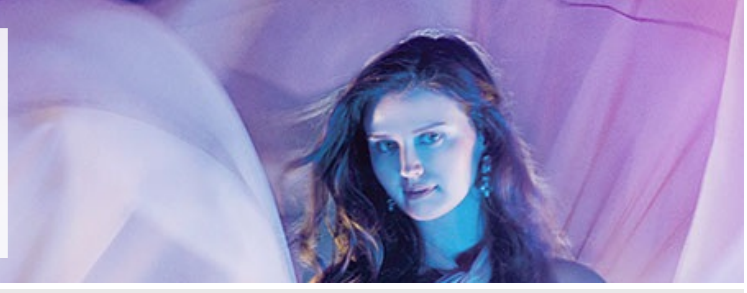


MST50116

Diploma of Applied Fashion Design and Merchandising



HELLO THERE, OUR DREAM IS TO HELP YOU **MAKE GREAT HAPPEN**



Industry endorsed



University Pathways



Payment options



Student satisfaction



\$15000 VET Student Loan available

OVERVIEW

Get an edge in the fashion world

The Diploma of Applied Fashion Design and Merchandising will give you an edge in today's fashion world. This 18 month course teaches you the skills, knowledge and techniques required to work in an entry position within the design, manufacturing, wholesale or retail areas of the fashion industry. In your final semester you will have the opportunity to apply for overseas study tours to global fashion destinations including New York, London, Paris, Milan, Hong Kong, Shanghai or New Delhi. On completion of this course you will have a portfolio

[...more online](#)



LOCATION/S

Mt Gravatt



DURATION

Full time: 1.5 years / 3 days per week

COURSE DETAILS

Course delivery options

WORKLOAD	LOCATION	DELIVERY
Full time 3 days per week	Mt Gravatt	Classroom

Key dates

For key start dates for each location visit the online brochure for this course (under the course details tab).

tafebrisbane.edu.au/course/17464

Entry requirements

This qualification has no formal entry criteria however TAFE Queensland Brisbane has the [...more online](#)

Resources required

No specific resources are required to successfully complete this course.

It is recommended that students have access to [...more online](#)

Important Information

Study Abroad

TAFE [...more online](#)

COSTS

What are my payment options

No matter what your circumstances, TAFE Queensland Brisbane has a payment option to suit you. If you are unsure of what's right for you, call us on 1300 712 007. We're here to help.

[...more online](#)



FULL FEE | \$20,095

This is the total cost of the course.

Got a question?

[Enquire about your full fee study options](#)

Accurate as at 8 November 2017. For the latest information see:

tafebrisbane.edu.au/course/17464

RTO 0275
CRICOS 03020E



Outcome

MST50116 Diploma of Applied Fashion Design and Merchandising

University pathways

If you want to go on to further study at university, TAFE Queensland has a pathway option to get you there. In many cases, completing one of our diplomas will give you a full year of credit towards a degree with one of our partner universities. That means cutting down the amount of time you need to complete your degree, or even enrolling straight into the second year of your university course.

More info:

[Learn more about University Pathways](#)

Our pathway partners include:



Job prospects

- Assistant Pattern Maker
- CAD Operator
- Dressmaker or Tailor
- Fashion Designer
- Fashion Stylist
- Machinist
- Manager/Assistant Manager
- Production Manager
- Quality Assurance Manager
- Retail Assistant/Salesperson
- Fashion Accessories Designer

ARE YOU READY TO TAKE THE NEXT STEP ON YOUR PATH TO GREAT?

Enrol today to secure your spot in this course.

HOW TO ENROL

Enrol now

You're ready if you have:

- checked your important dates (under the course details tab)
- checked you meet the entry requirements (under the course details tab)
- checked your course costs and know which payment option is right for you (under the costs tab)
- Read the [Student Rules](#) and [Withdrawals and Refund Policy](#)
- Created your [Unique Student Identifier](#) and can provide this to TAFE Queensland.

All done? You're ready to enrol

Units

The successful achievement of this qualification requires you to complete 9 core and all elective units. Upon successful completion of all units you will receive a MST50116 Diploma of Applied Fashion Design and Merchandising.

Stage 1

MSTFD2005	Identify design process for fashion designs	Elective
MSTGN2009	Operate computing technology in a TCF workplace	Core
MSTCL2010	Modify patterns to create basic styles	Elective
MSS402051	Apply quality standards	Core
MSTGN2011	Identify fibres, fabrics and textiles used in the TCF industry	Core
MSMENV272	Participate in environmentally sustainable work practices	Core
MSMWHS200	Work safely	Core
MSTFD2006	Use a sewing machine for fashion design	Elective

Apply through QTAC

Making TAFE one of your top QTAC preferences is a great way to maximise your career choices and gain the hands-on skills you need to operate in the real world.

We offer hundreds of pathways to university, including dual awards, credit arrangements with some of the country's top universities, and options to increase your OP so you can gain entrance to the tertiary course of your dreams.

Accurate as at 8 November 2017. For the latest information see:

tafebrisbane.edu.au/course/17464

RTO 0275
CRICOS 03020E

MSTFD3004	Draw a trade drawing for fashion design	Elective
MSTFD4020	Use electronic fashion design tools	Elective
MSTCL3009	Develop patterns from a block using basic patternmaking principles	Elective
MSTCL3001	Identify fabric performance and handling requirements	Core
MSTFD5005	Manipulate fabrics to create new finishes	Elective

Stage 2

MSTFD4003	Assist in preparation of preliminary design concepts	Elective
MSTFD5011	Produce fashion illustrations to assist product visualisation	Elective
MSTFD4021	Drape fabrics to make patterns	Elective
MSTFD4013	Grade 2-D patterns	Elective
MSTFD4010	Create pattern to meet design specifications applying advanced patternmaking principles	Elective
MSTTD5004	Design and produce experimental textiles	Elective
MSTFD4016	Sew design prototypes	Elective
MSTFD4014	Identify influences on contemporary fashion designs and construction techniques	Elective
MSTFD5020	Assess impact of current fashion industry innovations and practices	Elective
MSTFD4006	Interact and network with fashion industry participants	Core
MSTFD4004	Calculate cost estimates for fashion products	Core

Stage 3

MSTFD5001	Design bras and swimwear	Elective
MSTFD5010	Develop and present design concepts within specific guidelines	Core
MSTTD5007	Develop textile designs using computer-based design programs	Elective
MSTFD5021	Conduct digital patternmaking and grading	Elective
MSTFD5012	Perform contour draping	Elective
MSTFD5019	Analyse individual fit and make pattern alterations	Elective
MSTFD4015	Create pattern from block to meet customer specifications	Elective
MSTFD5018	Determine and specify advanced construction processes	Elective
MSTFD5007	Analyse influences on contemporary fashion designs	Elective
MSTFD5004	Develop marketing plans for fashion products	Elective
MSTFD5009	Cost production of fashion or textile designs	Elective

Disclaimer

Not all electives available at all campuses

More about applying through QTAC

Recognition of prior learning

Fast-track your way to a formal qualification by earning credit for the things you already know. Getting recognition for the skills you've gained from the workplace or previous learning means less study time for you, and getting the paper to prove you're qualified a whole lot sooner.

Make your future happen

Connect with TAFE on Facebook