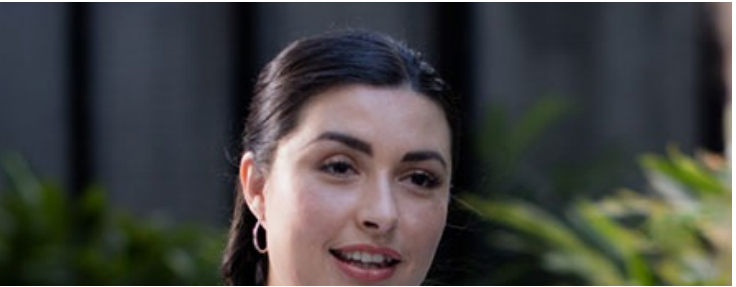


CHC51015

Diploma of Counselling

CONTINUING STUDENTS ONLY



HELLO THERE, OUR DREAM IS TO HELP YOU **MAKE GREAT HAPPEN**



Industry endorsed



University Pathways



Payment options



Student satisfaction



\$10000 VET Student Loan available

OVERVIEW

Choose a fulfilling career that can make a real difference

While undertaking the Diploma of Counselling with TAFE Queensland Brisbane, you will learn a range of counselling and high level communication skills to help others on their transformational journey.

This qualification will provide you with the skills and knowledge required to undertake generic counselling work in various support worker roles. You will be able to facilitate safe interventions for people at risk, learn the processes of case management, understand how and why people are motivated to change, learn self-awareness and

[...more online](#)



LOCATION/S

Caboolture, Loganlea, South Bank



DURATION

Part time: 2 years / Blended 2 nights per week
Full time: 12 months / up to 4 days per week

COURSE DETAILS

Course delivery options

WORKLOAD	LOCATION	DELIVERY
Full time up to 4 days per week	Caboolture	Classroom
Part time Blended 2 nights per week	Loganlea, South Bank	Classroom

Key dates

For key start dates for each location visit the online brochure for this course (under the course details tab).

tafebrisbane.edu.au/course/17829

Entry requirements

This qualification has no formal entry requirements.

All students must hold a current [...more online](#)

Resources required

No specific resources are required to successfully complete this course.

It is recommended that students have access to [...more online](#)

Important Information

For continuing students only [...more online](#)

COSTS

What are my payment options

No matter what your circumstances, TAFE Queensland Brisbane has a payment option to suit you. If you are unsure of what's right for you, call us on 1300 712 007. We're here to help.

[...more online](#)

Outcome

CHC51015 Diploma of Counselling

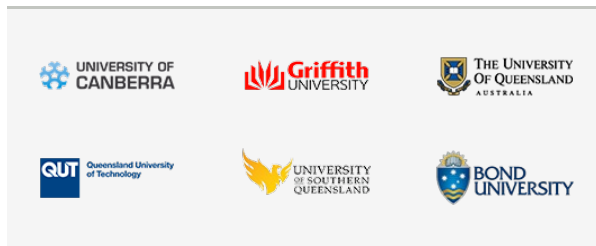
University pathways

If you want to go on to further study at university, TAFE Queensland has a pathway option to get you there. In many cases, completing one of our diplomas will give you a full year of credit towards a degree with one of our partner universities. That means cutting down the amount of time you need to complete your degree, or even enrolling straight into the second year of your university course.

More info:

[Learn more about University Pathways](#)

Our pathway partners include:



Job prospects

- Counsellors

ARE YOU READY TO TAKE THE NEXT STEP ON YOUR PATH TO GREAT?

Enrol today to secure your spot in this course.

HOW TO ENROL

Enrol now

You're ready if you have:

- checked your important dates (under the course details tab)
- checked you meet the entry requirements (under the course details tab)
- checked your course costs and know which payment option is right for you (under the costs tab)
- Read the [Student Rules](#) and [Withdrawals and Refund Policy](#)
- Created your [Unique Student Identifier](#) and can provide this to TAFE Queensland.

All done? You're ready to enrol

Recognition of prior learning

Fast-track your way to a formal qualification by earning credit for the things you already know. Getting recognition for the skills you've gained from the workplace or previous learning means less study time for you, and getting the paper to prove you're qualified a whole lot sooner.

Make your future happen

Connect with TAFE on Facebook

Units

The successful achievement of this qualification requires you to complete all core and 4 elective units from the list below. Electives may differ between TAFE Queensland locations and regions.

CHCPRP003	Reflect on and improve own professional practice	Core
CHCLEG001	Work legally and ethically	Core
CHCDIV002	Promote Aboriginal and/or Torres Strait Islander cultural safety	Core
CHCDIV001	Work with diverse people	Core
CHCCSM005	Develop, facilitate and review all aspects of case management	Core
CHCCSL007	Support counselling clients in decision-making processes	Core
CHCCSL006	Select and use counselling therapies	Core
CHCCSL005	Apply learning theories in counselling	Core
CHCCSL004	Research and apply personality and development theories	Core
CHCCSL003	Facilitate the counselling relationship and process	Core
CHCCSL002	Apply specialist interpersonal and counselling interview skills	Core
CHCCSL001	Establish and confirm the counselling relationship	Core
CHCCCS019	Recognise and respond to crisis situations	Core
CHCCCS017	Provide loss and grief support	Elective
CHCDFV001	Recognise and respond appropriately to domestic and family violence	Elective
CHCAOD001	Work in an alcohol and other drugs context	Elective
CHCMHS001	Work with people with mental health issues	Elective

Disclaimer

Not all electives available at all campuses

Accurate as at 14 June 2017. For the latest information see:
tafebrisbane.edu.au/course/17829

RTO 0275
CRICOS 03020E



Accurate as at 14 June 2017. For the latest information see:
tafebrisbane.edu.au/course/17829

RTO 0275
CRICOS 03020E

