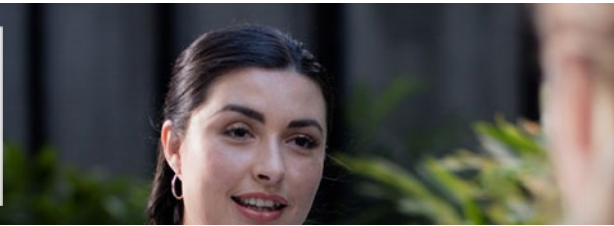


CHC55015

## Diploma of Community Services

VET  
Vocational Education and Training



+

HELLO THERE, OUR DREAM IS TO HELP YOU **MAKE GREAT HAPPEN**



Industry endorsed



University Pathways



Payment options



Student satisfaction



\$10,150 VET Student Loan available

OVERVIEW

### Are you community-minded?

This qualification reflects the roles of community services, case management and social housing workers involved in the managing, co-ordinating and/or delivering of person-centred services to individuals, groups and communities.

At this level, workers have specialised skills in community services and work autonomously under the direction of senior management. Workers are usually providing direct support to individuals or groups of individuals. Workers may also be responsible for the supervision of other workers and volunteers. This qualification will [...more online](#)



### LOCATION/S

Loganlea, South Bank



### DURATION

Full time: 1.5 years / up to 5 days per week

COURSE DETAILS

### Course delivery options

WORKLOAD	LOCATION	DELIVERY
Full time up to 5 days per week	Loganlea, South Bank	Classroom

### Key dates

For key start dates for each location visit the online brochure for this course (under the course details tab).

[tafebrisbane.edu.au/course/16887](http://tafebrisbane.edu.au/course/16887)

### Entry requirements

There are no formal entry requirements however TAFE Queensland Brisbane has the following [...more online](#)

### Resources required

No specific resources are required to successfully complete this course.

It is recommended that students have [...more online](#)

### Placement

Vocational Placement is an essential [...more online](#)

### Important Information

Please be aware in some instances [...more online](#)

### What are my payment options

No matter what your circumstances, TAFE Queensland Brisbane has a payment option to suit you. If you are unsure of what's right for you, or just want someone to talk it over with, call us on 1300 712 007. We're here to help.

To be eligible for the subsidised and concession price students must be an existing worker in the Community Services industry and meet eligibility

[...more online](#)

COSTS



FULL FEE | \$6,940

This is the total cost of the course.

Got a question?  
[Enquire about your full fee study options](#)



SUBSIDISED | \$3,895

The Queensland Government will offset the cost of study for **eligible students**. You will still need to pay for a portion of your study costs. The amount above is what you will need to pay.



CONCESSION | \$2,985

You are eligible for the concession price of a course if you are eligible for subsidised training, and are listed on an Australian Government Low Income Health Care Card or Pensioner Concession Card, if you are Aboriginal or Torres Strait Islander, you hold a Department of Veterans' Affairs Pensioner Concession Card, or if you have a disability. **Further information about concessions.**

## Outcome

CHC52015 Diploma of Community Services

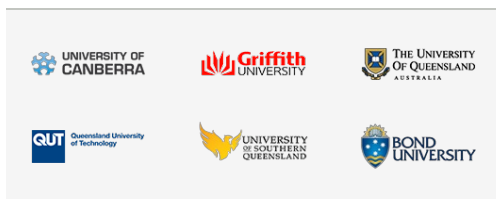
### University pathways

If you want to go on to further study at university, TAFE Queensland has a pathway option to get you there. In many cases, completing one of our diplomas will give you a full year of credit towards a degree with one of our partner universities. That means cutting down the amount of time you need to complete your degree, or even enrolling straight into the second year of your university course.

More info:

[Learn more about University Pathways](#)

Our pathway partners include:



### Job prospects

- Community Services Worker
- Support Worker
- Community Services Coordinator

## ARE YOU READY TO TAKE THE NEXT STEP ON YOUR PATH TO GREAT?

**Enrol today to secure your spot in this course.**

### HOW TO ENROL

#### Enrol now

You're ready if you have:

- checked your important dates (under the course details tab)
- checked you meet the entry requirements (under the course details tab)
- checked your course costs and know which payment option is right for you (under the costs tab)
- Read the [Student Rules](#) and [Withdrawals and Refund Policy](#)
- Created your [Unique Student Identifier](#) and can provide this to TAFE Queensland.

**All done? You're ready to enrol**

## Units

The successful achievement of this qualification requires you to complete all core and 8 elective units from the list below. Electives may differ between TAFE Queensland locations and regions.

### Stage 1

CHCCOM003	Develop workplace communication strategies	Core
CHCDIV003	Manage and promote diversity	Core
CHCLEG003	Manage legal and ethical compliance	Core
CHCPRP003	Reflect on and improve own professional practice	Core
HLTWHS004	Manage work health and safety	Core
CHCADV002	Provide advocacy and representation services	Elective
CHCGRP002	Plan and conduct group activities	Elective
VPC80	Vocational placement	Vocational Placement Scheme

### Stage 2

CHCCCS007	Develop and implement service programs	Core
CHCMGT005	Facilitate workplace debriefing and support processes	Core
CHCDEV002	Analyse impacts of sociological factors on clients in community work and services	Core
CHCCDE011	Implement community development strategies	Elective
VPC100	Vocational placement	Vocational Placement Scheme

### Stage 3

CHCMHS007	Work effectively in trauma informed care	Elective
CHCDFV006	Counsel clients affected by domestic and family violence	Elective
CHCCSM005	Develop, facilitate and review all aspects of case management	Elective
CHCCSL002	Apply specialist interpersonal and counselling interview skills	Elective
CHCMHS001	Work with people with mental health issues	Elective
VPC080	Vocational placement	Vocational Placement Scheme

### Disclaimer

Not all electives available at all campuses

### Apply through QTAC

Making TAFE one of your top QTAC preferences is a great way to maximise your career choices and gain the hands-on skills you need to operate in the real world.

We offer hundreds of pathways to university, including dual awards, credit arrangements with some of the country's top universities, and options to increase your OP so you can gain entrance to the tertiary course of your dreams.

[More about applying through QTAC](#)

### Recognition of prior learning

Fast-track your way to a formal qualification by earning credit for the things you already know. Getting recognition for the skills you've gained from the workplace or previous learning means less study time for you, and getting the paper to prove you're qualified a whole lot sooner.

### Make your future happen

[Connect with TAFE on Facebook](#)

